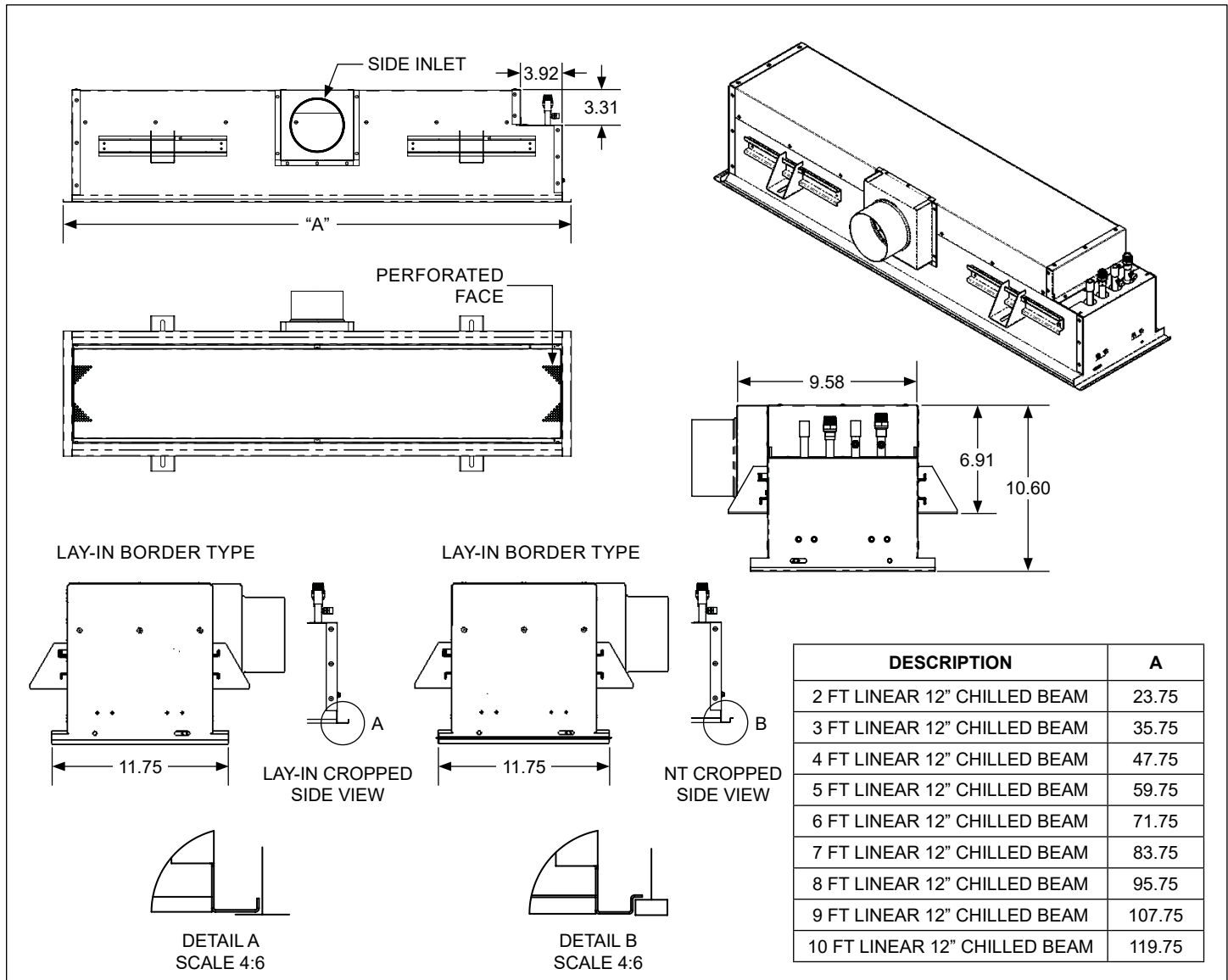


CBLV 12 • Active Linear Ceiling Mounted Chilled Beam • 1-Way & 2-Way Discharge • Vertical Coil

Side Inlet Configurations



General Description

- 12 inch wide, linear active chilled beam diffuser, available with 1-way or 2-way air distribution.
- Designed to fit into standard 12 inch ceiling grids, available with different borders.
- 2 to 10 feet chilled beam length in 1 feet increment.
- 2 pipe or 4 pipe coil configurations.
- Casing manufactured with galvanealed G90, 20 gauge sheet metal. Mechanically sealed, leak resistant construction.
- Coil with air vent and 1/2" water connection, available with sweat or threaded connection.
- Rails with adjustable mounting brackets are provided, quantity varies per unit length.
- 4, 5, or 6 inch round or 8 and 10 inch equivalent oval inlet connection, located either on the side or top.
- Return face panel assembly is hinged, on both sides, allowing to swing open from either side or to be completely removed and provide easy access to internal components.
- Return face panel assembly available with round perforation.
- Internal casing is painted black, while the exterior face and frame elements are painted white. Paint is powder coat, a mix of polyester and epoxy.

This Submittal is meant to demonstrate general dimensions and information of this product. The drawings are not meant to detail every aspect of the product. Drawings are not to scale. Titus reserves the right to make changes without written notice.

All rights reserved. No part of this work may be reproduced or transmitted in any form or by any means, electronic or mechanical, including photocopying and recording, or by any information storage retrieval system without permission in writing from Air Distribution Technologies.

Basic Unit Configuration

Beam Width (nominal- in) <input type="checkbox"/> 12	Unit Length (nominal - ft) <input type="checkbox"/> 2 <input type="checkbox"/> 3 <input type="checkbox"/> 4 <input type="checkbox"/> 5 <input type="checkbox"/> 6 <input type="checkbox"/> 7 <input type="checkbox"/> 8 <input type="checkbox"/> 9 <input type="checkbox"/> 10	Throw Pattern <input type="checkbox"/> 1 - Way towards inlet <input type="checkbox"/> 1 - Way away from inlet <input type="checkbox"/> 2 - Way	Nozzle Configuration <input type="checkbox"/> M13 <input type="checkbox"/> M17 <input type="checkbox"/> M20 <input type="checkbox"/> M23 <input type="checkbox"/> M27 <input type="checkbox"/> M31
Primary Air Inlet Diameter Connection (inch) <input type="checkbox"/> 5 <input type="checkbox"/> 6 <input type="checkbox"/> 8 <input type="checkbox"/> 10* <small>*Note: 8" and 10" are equivalent oval</small>	Primary Air Inlet Orientation <input type="checkbox"/> Side <input type="checkbox"/> Top	Border Type <input type="checkbox"/> Lay In <input type="checkbox"/> Tegular 9/16" (NT)	Face Pattern <input type="checkbox"/> Circular Perforation
Coil Type - Water Side Connection <input type="checkbox"/> 2 Pipe - Left Hand <input type="checkbox"/> 2 Pipe - Right Hand <input type="checkbox"/> 4 Pipe - Left Hand <input type="checkbox"/> 4 Pipe - Right Hand	Coil Connection -Type <input type="checkbox"/> ½ in Sweat (SWT) <input type="checkbox"/> ½ in MNPT* (MPT) <input type="checkbox"/> ¾ in MNPT* (3PT) <small>Note: 1) MNPT required for CBHK hoses 2) CBHK hoses ordered separately</small>	Exposed Face Finish Color <input type="checkbox"/> White #26 <input type="checkbox"/> Black #84	

Accessories

Check ☒ if provided.

☐ Lint Screen ☐ Insulation

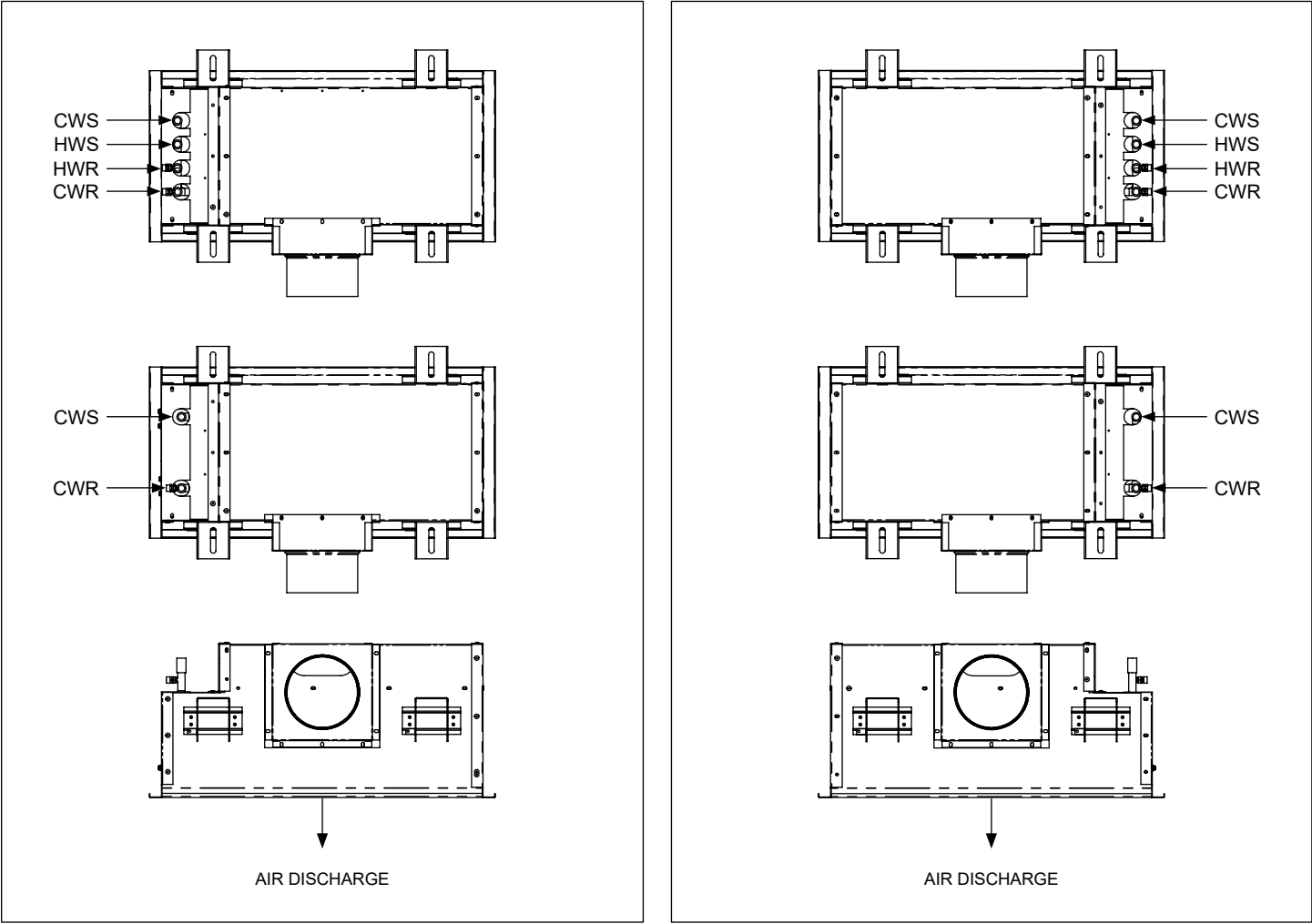
Unit Option Details

OPTIONAL TOP INLET

Diagram illustrating the optional top inlet configuration. The unit is shown with a top-mounted circular inlet. Two water coil connections are indicated on the side, labeled 'WATER COIL CONNECTIONS (2 PIPE, RIGHT HAND SHOWN)'. Adjustable mounting brackets are shown on the side, labeled 'ADJUSTABLE MOUNTING BRACKETS USE 3/8" THREADED RODS TO SUSPEND TO CEILING (x4 L = 2' TO 6') (x8 L = 7' TO 10')'.

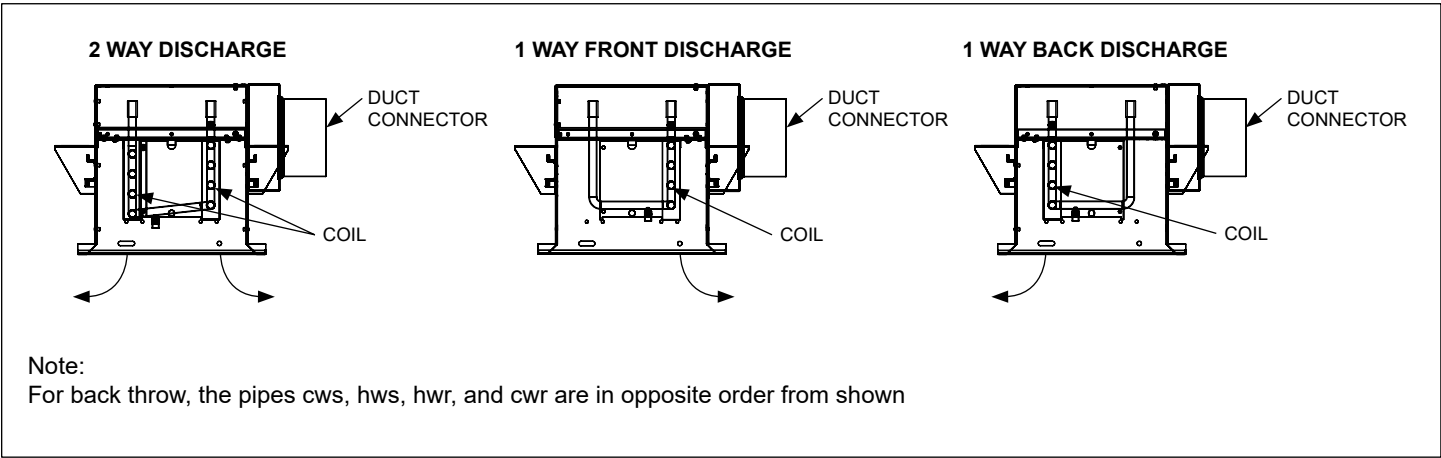
Note:
Hand of unit is determined by facing the horizontal air inlet connection and by the location of the cooling water supply connection.

Inlet, Discharge and Piping Configuration

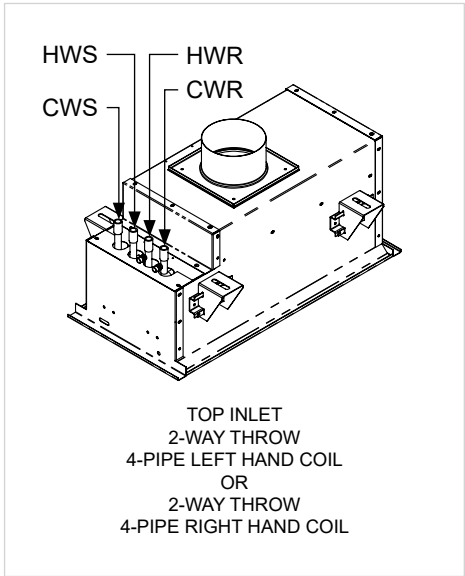
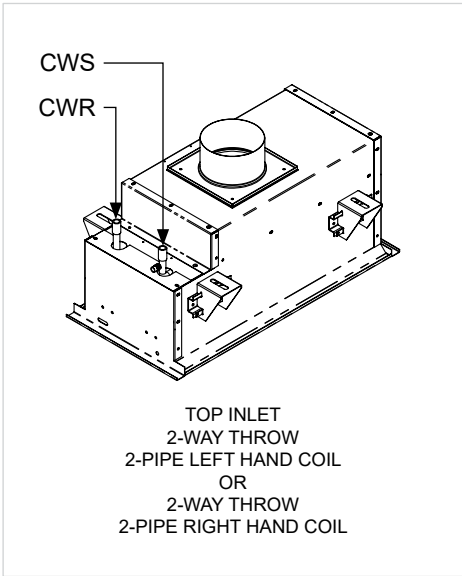
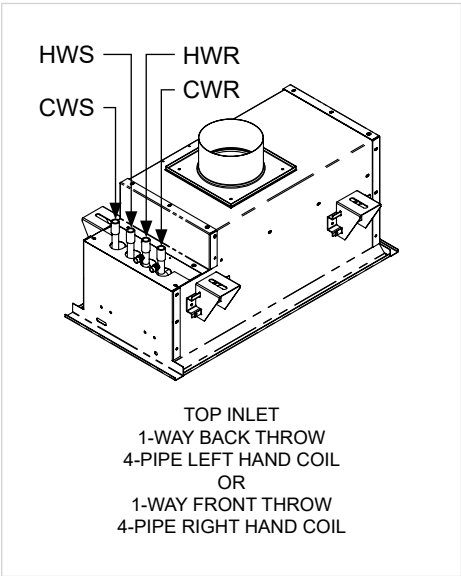
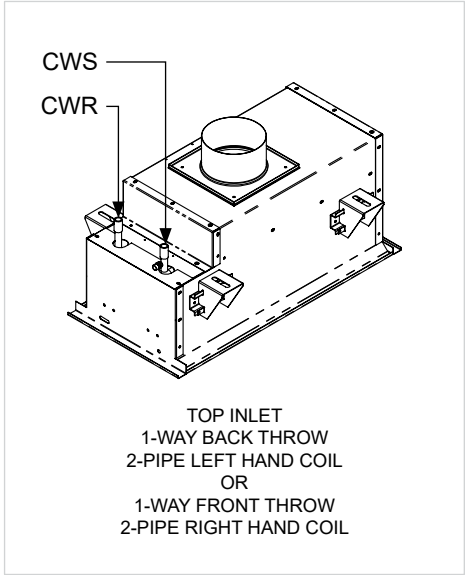
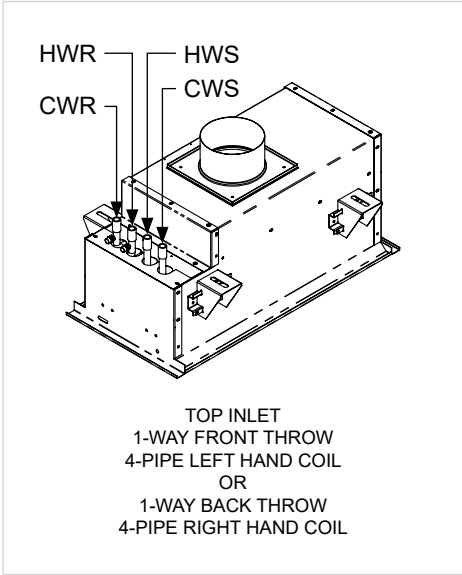
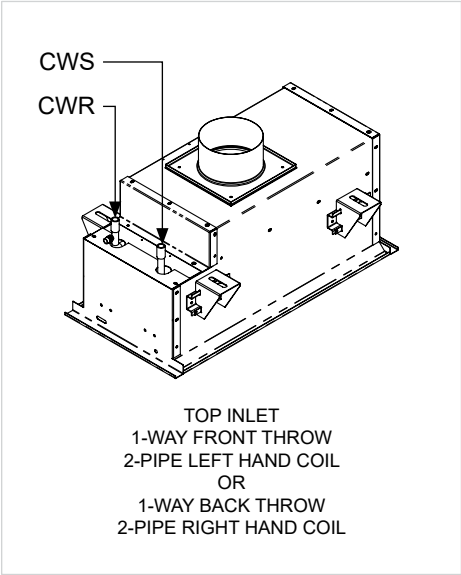


LEFT HAND PIPES

RIGHT HAND PIPES



Top Inlet Configuration Coil Connection Details



R - RETURN **W** - WATER **S** - SUPPLY
HWR - HEATING WATER RETURN **HWS** - HEATING WATER SUPPLY
CWR - COOLING WATER RETURN **CWS** - COOLING WATER SUPPLY